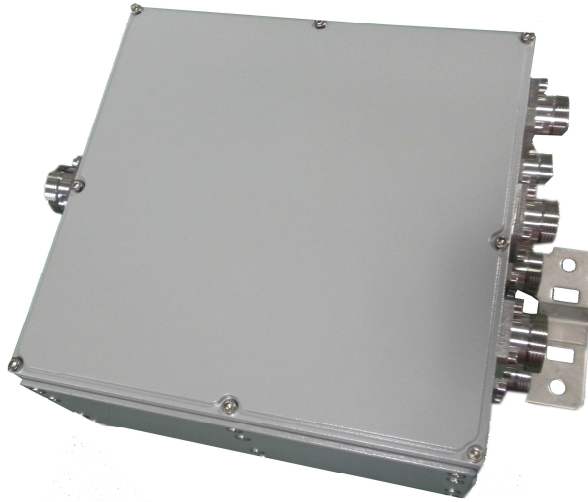


1710-1880/1920-2170/2400-2700MHz


Specifications

Items	Values		
Frequency	1710-1880MHz	1920-2170MHz	2400-2700MHz
Insertion Loss	≤0.3dB		
Isolation(dB)	≥50dB @ 1920-2700MHz	≥50dB @ 2400-2700MHz ≥50dB @ 1710-1880MHz	≥50dB @ 1710-2170MHz
IMD3	≤-150 dBc @43dBm×2		
Return Loss	≥18dB		
Impedance	50Ω		
DC Pass	2500mA (Between all ports)		
Power Capacity	300W		
Protection	IP65		
RF Connection	Din-F		
Temperature Range	-40- +70 °C		
Size	540×543.6×124.8mm		
Weight	4.35Kg		

Model

Single Unit	Double Unit	DC Pass
CR-TrDP182127Z-SN	CR-TrDP182127Z-DN	NO DC Pass
CR-TrDP182127Z-SL	CR-TrDP182127Z-DL	DC Pass in Lower Band
CR-TrDP182127Z-SH	CR-TrDP182127Z-DH	DC Pass in Higher Band
CR-TrDP182127Z-SA	CR-TrDP182127Z-DA	DC Pass in Both Bands

Outline Drawing

