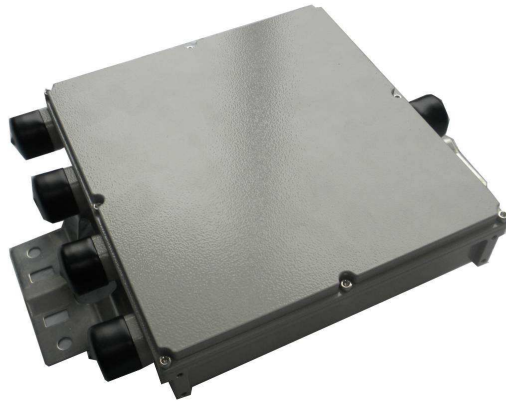


800-960/1710-1880/1920-2170/2400-2700MHz



Specifications

Models	CR-QP08182127			
Frequency	800-960MHz	1710-1880MHz	1920-2170MHz	2400-2700MHz
Insertion Loss	≤0.3dB			
Ripple in Band	≤0.2dB	≤0.4dB	≤0.4dB	≤0.4dB
Port Isolation	≥80dB @ Other Ports			
VSWR	≤1.25			
Impedance	50Ω			
Power Capacity	200W			
IMD3	≤-150dBc @ +43dBm×2			
DC Pass	2500mA (Between all port)			
RF Connection	DIN-F			
Protection	IP65			
Temperature Range	-40- +60°C			
Size	315×235×47mm			
Weight	1.0Kg			

