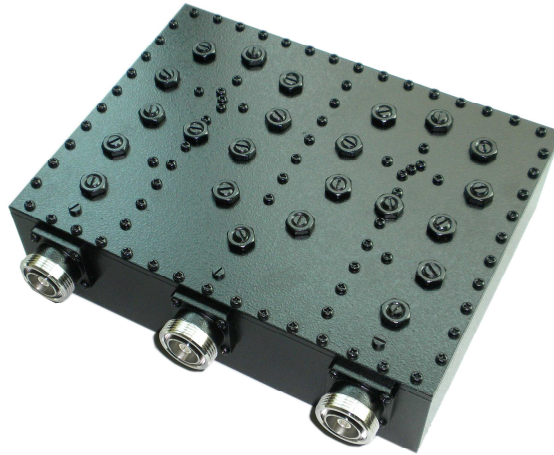


800MHz Duplexer

806-824MHz/851-869MHz PIM-150dBc



Specifications

Models	CR-DuPI08-18-A
Frequency	Rx:806-824MHz Tx: 851-869MHz
Insertion Loss	≤0.6dB
Ripple in Band	≤0.4dB
Isolation (Rx-Tx)	≥70dB
VSWR	≤1.25dB
IMD3	≤150dBc @2×43dBm
Impedance	50Ω
Power Capacity	400W
RF Connection	DIN-F
Application	Indoor & Outdoor (IP65)
Temperature Range	-10- +50 °C
Size	227×193.6×66 mm
Weight	3.25Kg

