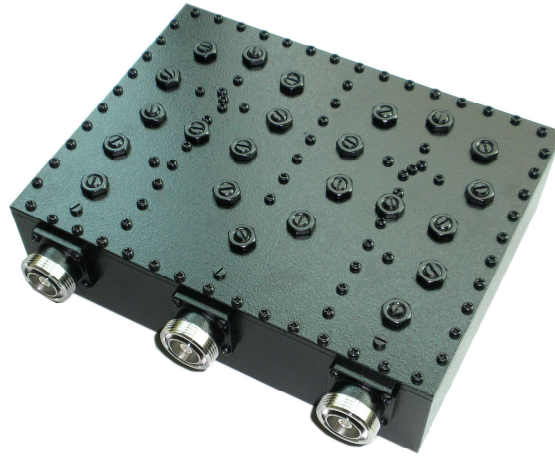


800MHz Duplexer

824-849MHz/869-894MHz PIM-150dBc



Specifications

<b>Models</b>	CR-DuPG08-25-A
<b>Frequency</b>	Rx:824-849MHz Tx: 869-894MHz
<b>Insertion Loss</b>	≤0.6dB
<b>Ripple in Band</b>	≤0.4dB
<b>Isolation (Rx-Tx)</b>	≥70dB
<b>VSWR</b>	≤1.25dB
<b>IMD3</b>	≤150dBc @2×43dBm
<b>Impedance</b>	50Ω
<b>Power Capacity</b>	400W
<b>RF Connection</b>	DIN-F
<b>Application</b>	Indoor & Outdoor (IP65)
<b>Temperature Range</b>	-10- +50 °C
<b>Size</b>	227×193.6×66 mm
<b>Weight</b>	3.25Kg

